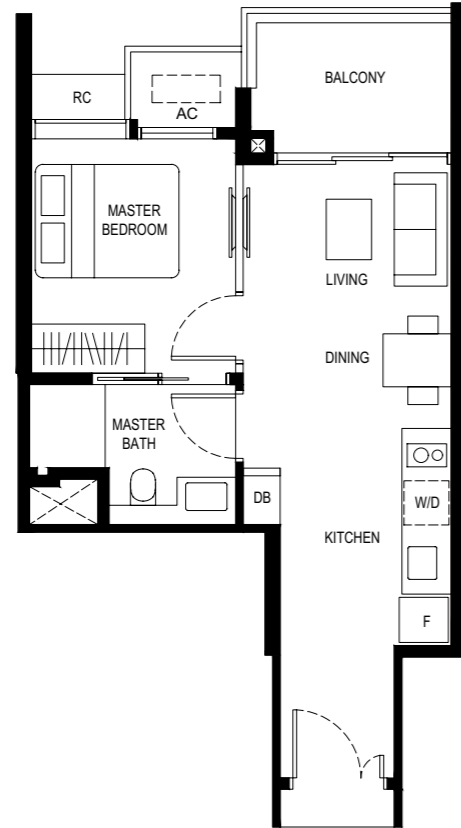


# 1 BEDROOM

## Type (1)a

44 sq m

#02-05 to #08-05  
 #02-14\* to #08-14\*  
 #02-23 to #08-23  
 #02-32\* to #08-32\*

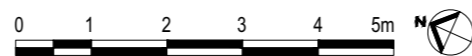


\* MIRROR UNIT

### LEGEND

- F - FRIDGE DB - DISTRIBUTION BOARD W/D - WASHER CUM DRYER
- AC - AIRCON LEDGE RC - REINFORCED CONCRETE LEDGE (NON-STRATA AREA)
- SERVICES VOID SPACE (NON-STRATA AREA)
- RAINWATER DOWNPIPE SHAFT SPACE (NON-STRATA AREA)
- WALL NOT ALLOWED TO BE HACKED OR ALTERED (INCLUDING BY WAY OF DRILLING)
- NON - STRUCTURAL WALL
- AIRCON CONDENSER

\*THE BALCONY SHALL NOT BE ENCLOSED. ONLY APPROVED BALCONY SCREENS ARE TO BE USED. FOR AN ILLUSTRATION OF THE APPROVED BALCONY SCREEN, PLEASE REFER TO PAGE 55 OF THIS BROCHURE

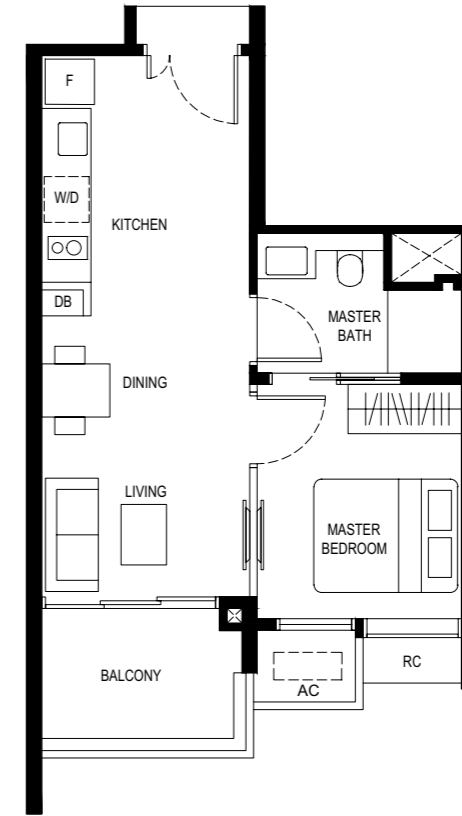


# 1 BEDROOM

## Type (1)b

44 sq m

#02-01 to #08-01  
 #02-19 to #08-19  
 #02-36\* to #08-36\*

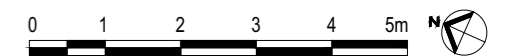


\* MIRROR UNIT

### LEGEND

- F - FRIDGE DB - DISTRIBUTION BOARD W/D - WASHER CUM DRYER
- AC - AIRCON LEDGE RC - REINFORCED CONCRETE LEDGE (NON-STRATA AREA)
- SERVICES VOID SPACE (NON-STRATA AREA)
- RAINWATER DOWNPIPE SHAFT SPACE (NON-STRATA AREA)
- WALL NOT ALLOWED TO BE HACKED OR ALTERED (INCLUDING BY WAY OF DRILLING)
- NON - STRUCTURAL WALL
- AIRCON CONDENSER

\*THE BALCONY SHALL NOT BE ENCLOSED. ONLY APPROVED BALCONY SCREENS ARE TO BE USED. FOR AN ILLUSTRATION OF THE APPROVED BALCONY SCREEN, PLEASE REFER TO PAGE 55 OF THIS BROCHURE



# 1 BEDROOM

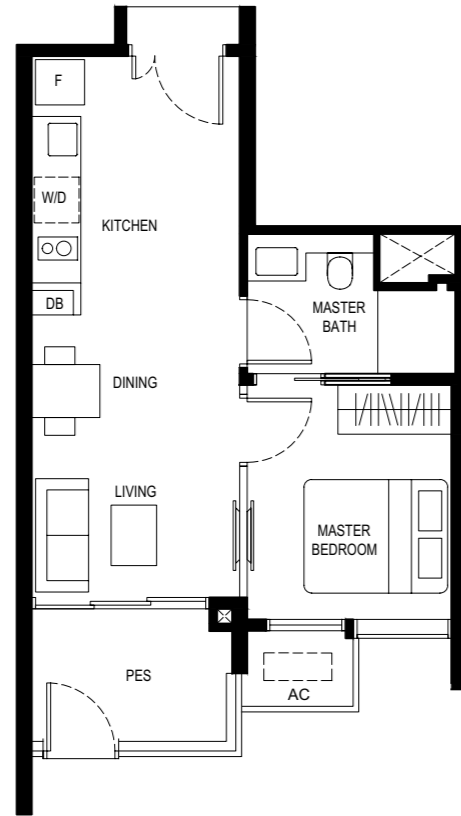
Type (1)b1

44 sq m

#01-01

#01-19

#01-36\*



\* MIRROR UNIT

LEGEND

F - FRIDGE DB - DISTRIBUTION BOARD W/D - WASHER CUM DRYER

AC - AIRCON LEDGE PES - PRIVATE ENCLOSED SPACE

SERVICES VOID SPACE (NON-STRATA AREA)

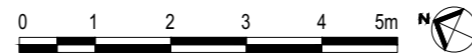
RAINWATER DOWNPIPE SHAFT SPACE (NON-STRATA AREA)

WALL NOT ALLOWED TO BE HACKED OR ALTERED (INCLUDING BY WAY OF DRILLING)

NON - STRUCTURAL WALL

AIRCON CONDENSER

\*THE BALCONY SHALL NOT BE ENCLOSED. ONLY APPROVED BALCONY SCREENS ARE TO BE USED. FOR AN ILLUSTRATION OF THE APPROVED BALCONY SCREEN, PLEASE REFER TO PAGE 55 OF THIS BROCHURE



# 1 BEDROOM (with study)

Type (1+1)a

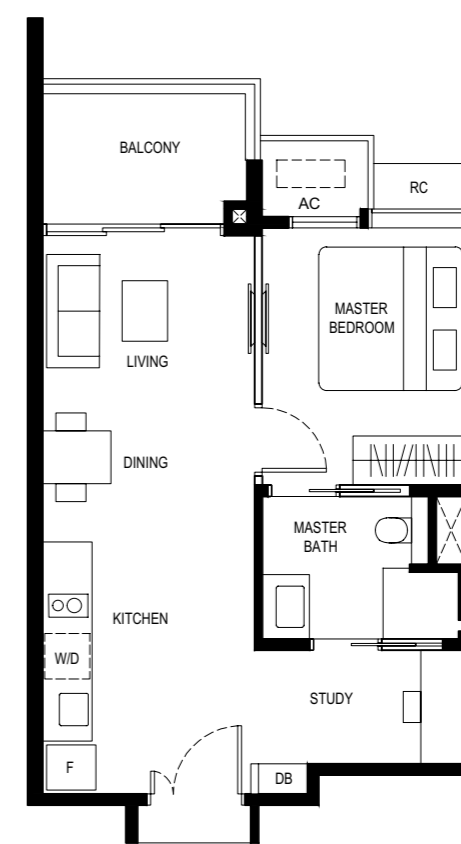
51 sq m

#02-06 to #08-06

#02-13\* to #08-13\*

#02-24 to #08-24

#02-31\* to #08-31\*



\* MIRROR UNIT

LEGEND

F - FRIDGE DB - DISTRIBUTION BOARD W/D - WASHER CUM DRYER

AC - AIRCON LEDGE RC - REINFORCED CONCRETE LEDGE (NON-STRATA AREA)

SERVICES VOID SPACE (NON-STRATA AREA)

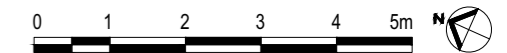
RAINWATER DOWNPIPE SHAFT SPACE (NON-STRATA AREA)

WALL NOT ALLOWED TO BE HACKED OR ALTERED (INCLUDING BY WAY OF DRILLING)

NON - STRUCTURAL WALL

AIRCON CONDENSER

\*THE BALCONY SHALL NOT BE ENCLOSED. ONLY APPROVED BALCONY SCREENS ARE TO BE USED. FOR AN ILLUSTRATION OF THE APPROVED BALCONY SCREEN, PLEASE REFER TO PAGE 55 OF THIS BROCHURE

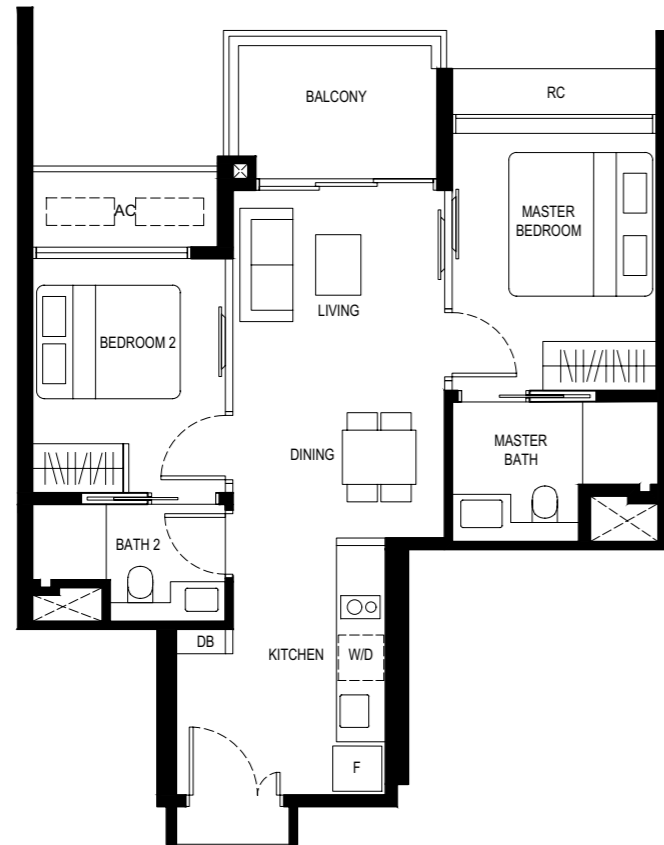


## 2 BEDROOM

### Type (2)a

61 sq m

#02-04 to #08-04  
 #02-15\* to #08-15\*  
 #02-22 to #08-22  
 #02-33\* to #08-33\*

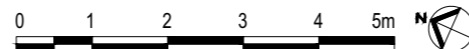


\* MIRROR UNIT

#### LEGEND

- F - FRIDGE DB - DISTRIBUTION BOARD W/D - WASHER CUM DRYER
- AC - AIRCON LEDGE RC - REINFORCED CONCRETE LEDGE (NON-STRATA AREA)
- SERVICES VOID SPACE (NON-STRATA AREA)
- RAINWATER DOWNPIPE SHAFT SPACE (NON-STRATA AREA)
- WALL NOT ALLOWED TO BE HACKED OR ALTERED (INCLUDING BY WAY OF DRILLING)
- NON - STRUCTURAL WALL
- AIRCON CONDENSER

\*THE BALCONY SHALL NOT BE ENCLOSED. ONLY APPROVED BALCONY SCREENS ARE TO BE USED. FOR AN ILLUSTRATION OF THE APPROVED BALCONY SCREEN, PLEASE REFER TO PAGE 55 OF THIS BROCHURE



## 2 BEDROOM

### Type (2)a1

61 sq m

#01-04  
 #01-15\*  
 #01-22  
 #01-33\*

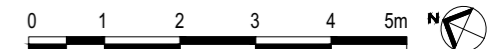


\* MIRROR UNIT

#### LEGEND

- F - FRIDGE DB - DISTRIBUTION BOARD W/D - WASHER CUM DRYER
- AC - AIRCON LEDGE PES - PRIVATE ENCLOSED SPACE
- SERVICES VOID SPACE (NON-STRATA AREA)
- RAINWATER DOWNPIPE SHAFT SPACE (NON-STRATA AREA)
- WALL NOT ALLOWED TO BE HACKED OR ALTERED (INCLUDING BY WAY OF DRILLING)
- NON - STRUCTURAL WALL
- AIRCON CONDENSER

\*THE BALCONY SHALL NOT BE ENCLOSED. ONLY APPROVED BALCONY SCREENS ARE TO BE USED. FOR AN ILLUSTRATION OF THE APPROVED BALCONY SCREEN, PLEASE REFER TO PAGE 55 OF THIS BROCHURE



## 2 BEDROOM

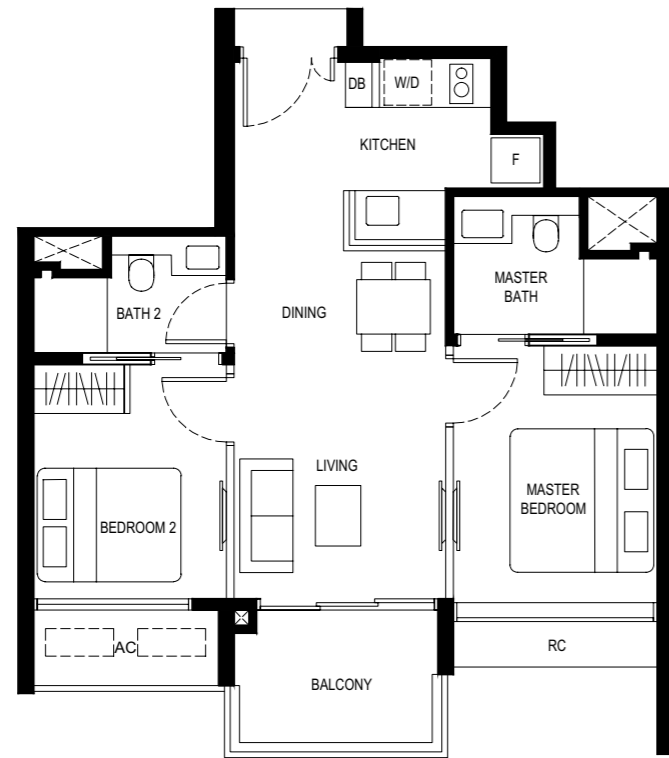
Type (2)b

61 sq m

#02-09 to #08-09

#02-27 to #08-27

#02-28\* to #08-28\*



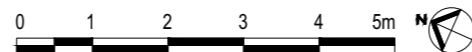
\* MIRROR UNIT

LEGEND

F - FRIDGE DB - DISTRIBUTION BOARD W/D - WASHER CUM DRYER  
AC - AIRCON LEDGE RC - REINFORCED CONCRETE LEDGE (NON-STRATA AREA)

- SERVICES VOID SPACE (NON-STRATA AREA)
- RAINWATER DOWNPIPE SHAFT SPACE (NON-STRATA AREA)
- WALL NOT ALLOWED TO BE HACKED OR ALTERED (INCLUDING BY WAY OF DRILLING)
- NON - STRUCTURAL WALL
- AIRCON CONDENSER

\*THE BALCONY SHALL NOT BE ENCLOSED. ONLY APPROVED BALCONY SCREENS ARE TO BE USED. FOR AN ILLUSTRATION OF THE APPROVED BALCONY SCREEN, PLEASE REFER TO PAGE 55 OF THIS BROCHURE



## 2 BEDROOM

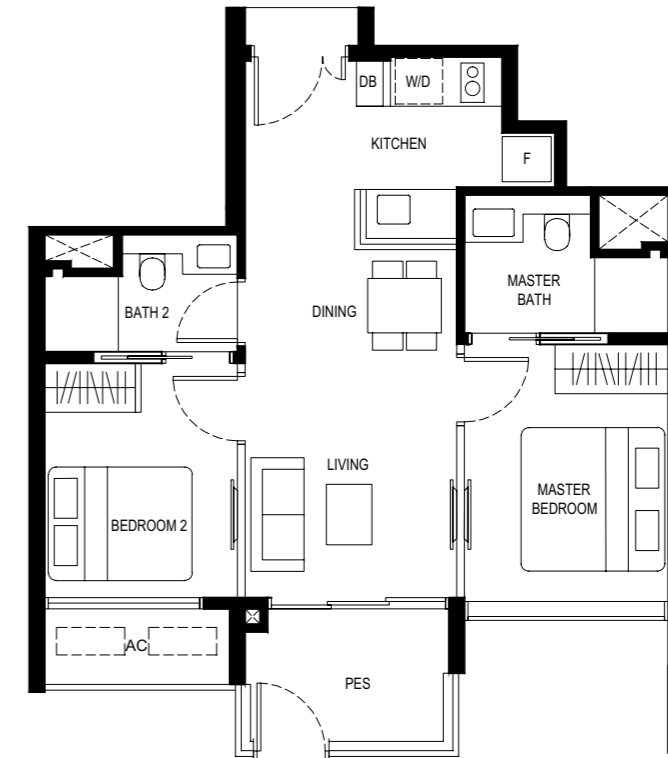
Type (2)b1

61 sq m

#01-09

#01-27

#01-28\*



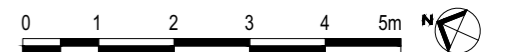
\* MIRROR UNIT

LEGEND

F - FRIDGE DB - DISTRIBUTION BOARD W/D - WASHER CUM DRYER  
AC - AIRCON LEDGE PES - PRIVATE ENCLOSED SPACE

- SERVICES VOID SPACE (NON-STRATA AREA)
- RAINWATER DOWNPIPE SHAFT SPACE (NON-STRATA AREA)
- WALL NOT ALLOWED TO BE HACKED OR ALTERED (INCLUDING BY WAY OF DRILLING)
- NON - STRUCTURAL WALL
- AIRCON CONDENSER

\*THE BALCONY SHALL NOT BE ENCLOSED. ONLY APPROVED BALCONY SCREENS ARE TO BE USED. FOR AN ILLUSTRATION OF THE APPROVED BALCONY SCREEN, PLEASE REFER TO PAGE 55 OF THIS BROCHURE

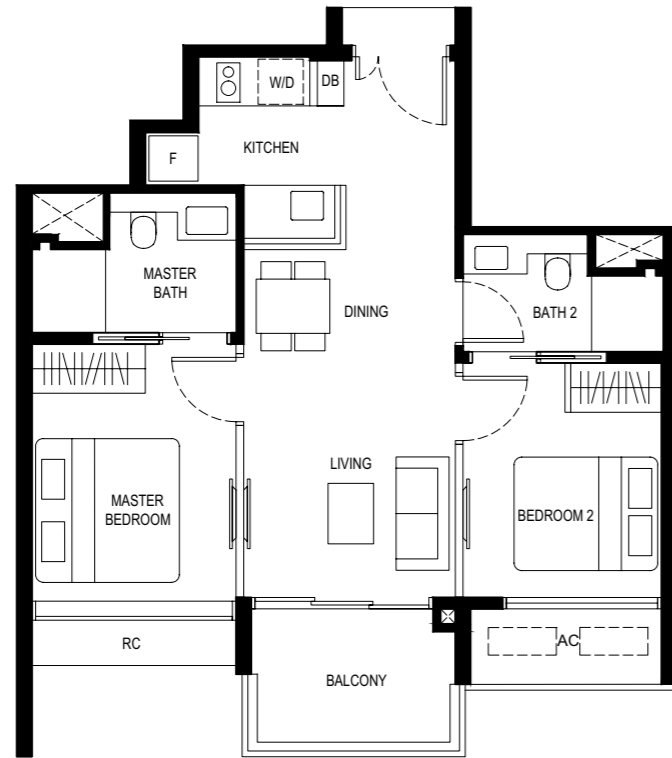


## 2 BEDROOM

Type (2)c

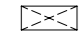




61 sq m

#02-10 to #08-10  
#02-18\* to #08-18\*

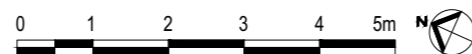


\* MIRROR UNIT

LEGEND

- F - FRIDGE DB - DISTRIBUTION BOARD W/D - WASHER CUM DRYER
- AC - AIRCON LEDGE RC - REINFORCED CONCRETE LEDGE (NON-STRATA AREA)
-  SERVICES VOID SPACE (NON-STRATA AREA)
-  RAINWATER DOWNPIPE SHAFT SPACE (NON-STRATA AREA)
-  WALL NOT ALLOWED TO BE HACKED OR ALTERED (INCLUDING BY WAY OF DRILLING)
-  NON - STRUCTURAL WALL
-  AIRCON CONDENSER

\*THE BALCONY SHALL NOT BE ENCLOSED. ONLY APPROVED BALCONY SCREENS ARE TO BE USED. FOR AN ILLUSTRATION OF THE APPROVED BALCONY SCREEN, PLEASE REFER TO PAGE 55 OF THIS BROCHURE

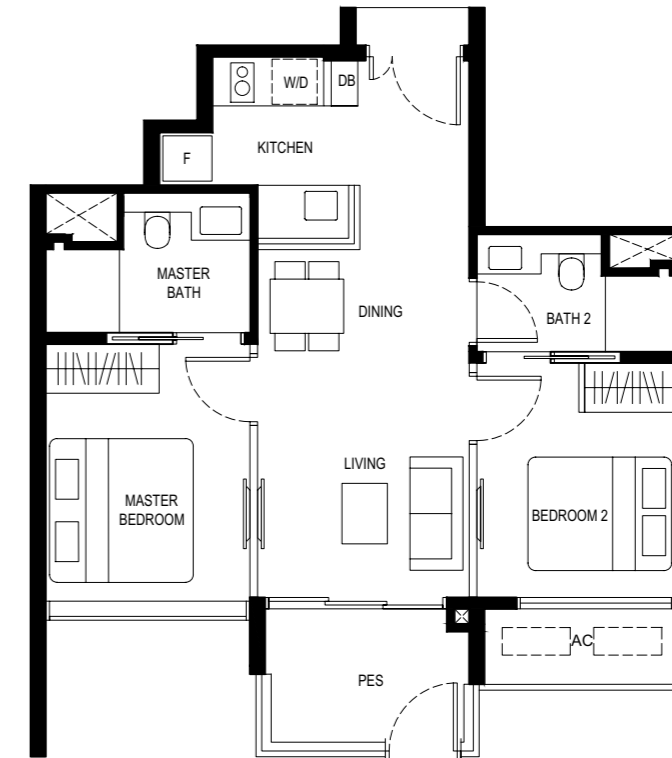


## 2 BEDROOM

Type (2)c1






61 sq m

#01-10  
#01-18\*

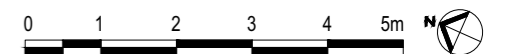


\* MIRROR UNIT

LEGEND

- F - FRIDGE DB - DISTRIBUTION BOARD W/D - WASHER CUM DRYER
- AC - AIRCON LEDGE PES - PRIVATE ENCLOSED SPACE
-  SERVICES VOID SPACE (NON-STRATA AREA)
-  RAINWATER DOWNPIPE SHAFT SPACE (NON-STRATA AREA)
-  WALL NOT ALLOWED TO BE HACKED OR ALTERED (INCLUDING BY WAY OF DRILLING)
-  NON - STRUCTURAL WALL
-  AIRCON CONDENSER

\*THE BALCONY SHALL NOT BE ENCLOSED. ONLY APPROVED BALCONY SCREENS ARE TO BE USED. FOR AN ILLUSTRATION OF THE APPROVED BALCONY SCREEN, PLEASE REFER TO PAGE 55 OF THIS BROCHURE



## 2 BEDROOM (with study)

Type (2+1)a

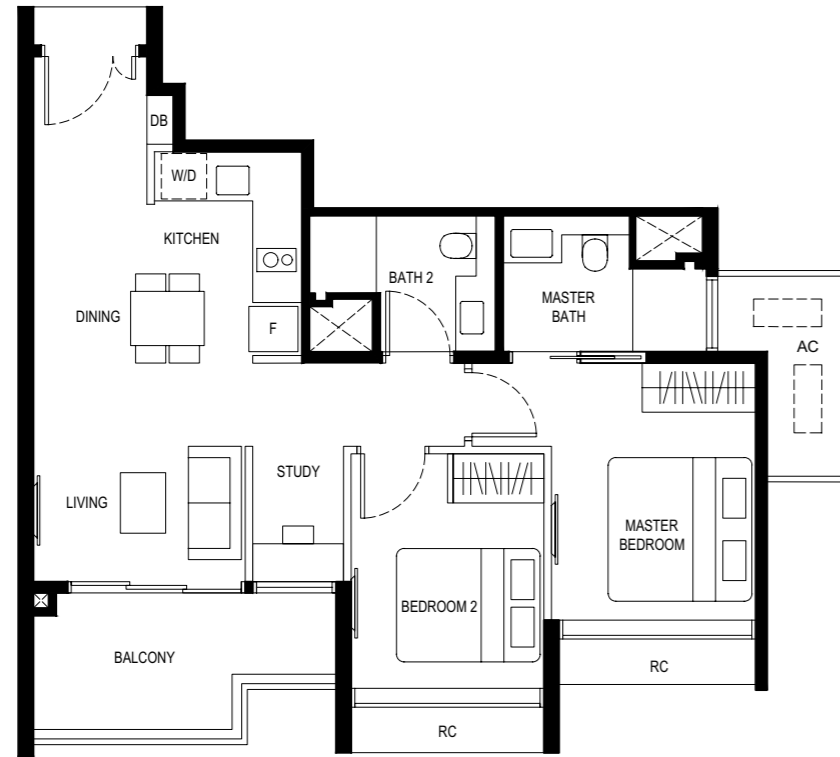
70 sq m

#02-08 to #08-08

#02-11\* to #08-11\*

#02-26 to #08-26

#02-29 to #08-29\*



\* MIRROR UNIT

LEGEND

F - FRIDGE DB - DISTRIBUTION BOARD W/D - WASHER CUM DRYER

AC - AIRCON LEDGE RC - REINFORCED CONCRETE LEDGE (NON-STRATA AREA)

SERVICES VOID SPACE (NON-STRATA AREA)

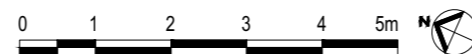
RAINWATER DOWNPIPE SHAFT SPACE (NON-STRATA AREA)

WALL NOT ALLOWED TO BE HACKED OR ALTERED (INCLUDING BY WAY OF DRILLING)

NON - STRUCTURAL WALL

AIRCON CONDENSER

\*THE BALCONY SHALL NOT BE ENCLOSED. ONLY APPROVED BALCONY SCREENS ARE TO BE USED. FOR AN ILLUSTRATION OF THE APPROVED BALCONY SCREEN, PLEASE REFER TO PAGE 55 OF THIS BROCHURE



## 2 BEDROOM (with study)

Type (2+1)a1

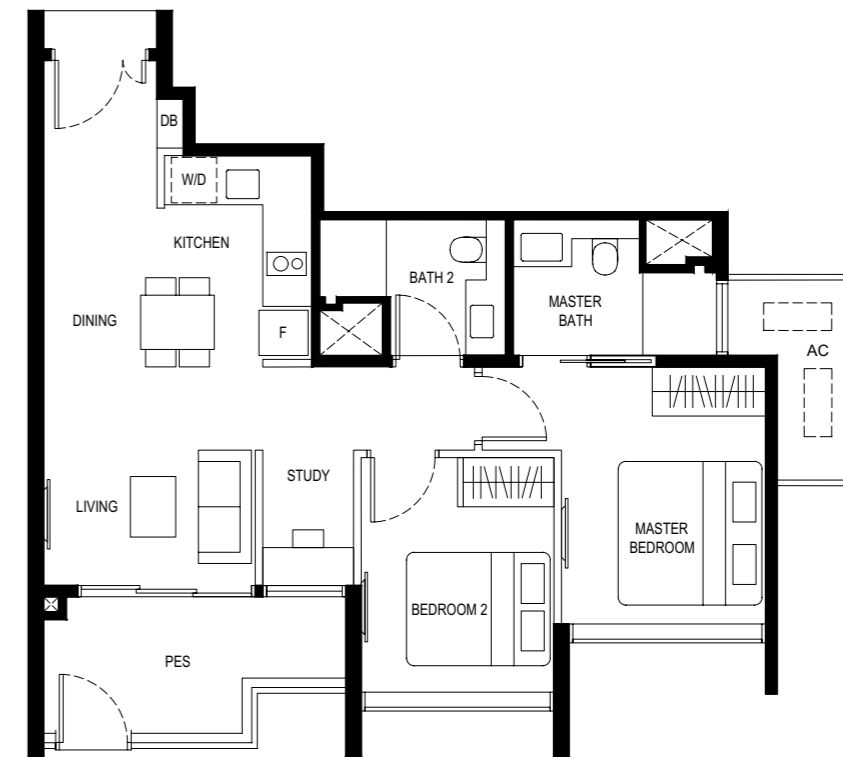
70 sq m

#01-08

#01-11\*

#01-26

#01-29\*



\* MIRROR UNIT

LEGEND

F - FRIDGE DB - DISTRIBUTION BOARD W/D - WASHER CUM DRYER

AC - AIRCON LEDGE PES - PRIVATE ENCLOSED SPACE

SERVICES VOID SPACE (NON-STRATA AREA)

RAINWATER DOWNPIPE SHAFT SPACE (NON-STRATA AREA)

WALL NOT ALLOWED TO BE HACKED OR ALTERED (INCLUDING BY WAY OF DRILLING)

NON - STRUCTURAL WALL

AIRCON CONDENSER

\*THE BALCONY SHALL NOT BE ENCLOSED. ONLY APPROVED BALCONY SCREENS ARE TO BE USED. FOR AN ILLUSTRATION OF THE APPROVED BALCONY SCREEN, PLEASE REFER TO PAGE 55 OF THIS BROCHURE



## 2 BEDROOM (with study)

Type (2+1)b1

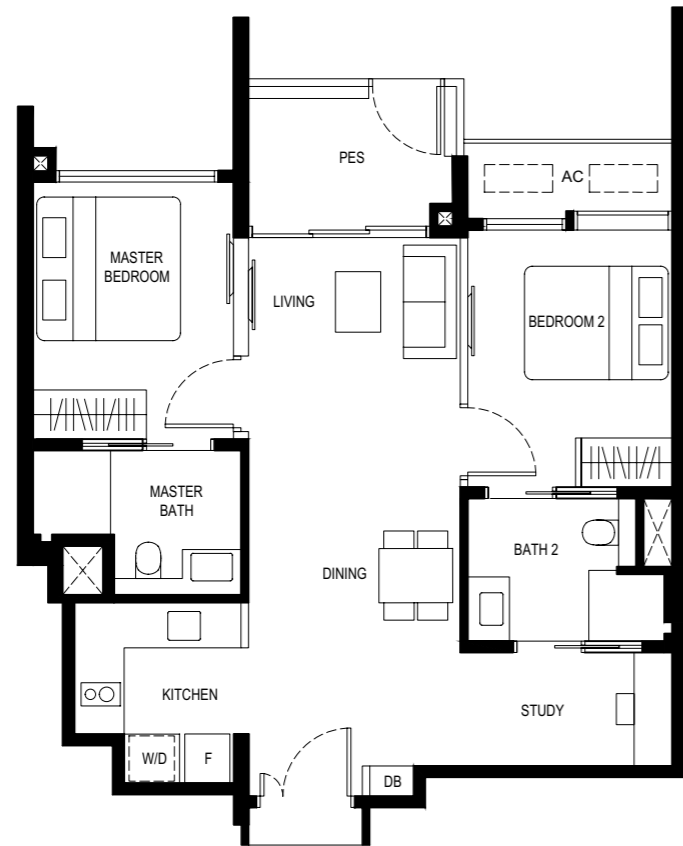
72 sq m

#01-06

#01-13\*

#01-24

#01-31\*



\*MIRROR UNIT

### LEGEND

F - FRIDGE DB - DISTRIBUTION BOARD W/D - WASHER CUM DRYER

AC - AIRCON LEDGE PES - PRIVATE ENCLOSED SPACE

☒ SERVICES VOID SPACE (NON-STRATA AREA)

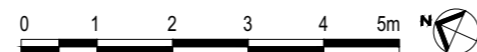
☒ RAINWATER DOWNPIPE SHAFT SPACE (NON-STRATA AREA)

— WALL NOT ALLOWED TO BE HACKED OR ALTERED  
(INCLUDING BY WAY OF DRILLING)

— NON - STRUCTURAL WALL

— AIRCON CONDENSER

\*THE BALCONY SHALL NOT BE ENCLOSED. ONLY APPROVED BALCONY SCREENS ARE TO BE USED. FOR AN ILLUSTRATION OF THE APPROVED BALCONY SCREEN, PLEASE REFER TO PAGE 55 OF THIS BROCHURE



## 3 BEDROOM

Type (3)a

86 sq m

#03-17 to #08-17



### LEGEND

F - FRIDGE DB - DISTRIBUTION BOARD W/D - WASHER CUM DRYER

AC - AIRCON LEDGE RC - REINFORCED CONCRETE LEDGE (NON-STRATA AREA)

☒ SERVICES VOID SPACE (NON-STRATA AREA)

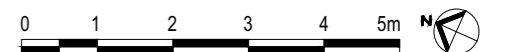
☒ RAINWATER DOWNPIPE SHAFT SPACE (NON-STRATA AREA)

— WALL NOT ALLOWED TO BE HACKED OR ALTERED  
(INCLUDING BY WAY OF DRILLING)

— NON - STRUCTURAL WALL

— AIRCON CONDENSER

\*THE BALCONY SHALL NOT BE ENCLOSED. ONLY APPROVED BALCONY SCREENS ARE TO BE USED. FOR AN ILLUSTRATION OF THE APPROVED BALCONY SCREEN, PLEASE REFER TO PAGE 55 OF THIS BROCHURE



# 3 BEDROOM

Type (3)b

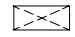




84 sq m

#03-02 to #08-02  
 #03-20 to #08-20  
 #03-35\* to #08-35\*

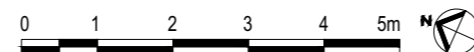


\* MIRROR UNIT

### LEGEND

- F - FRIDGE DB - DISTRIBUTION BOARD W/D - WASHER CUM DRYER
- AC - AIRCON LEDGE RC - REINFORCED CONCRETE LEDGE (NON-STRATA AREA)
-  SERVICES VOID SPACE (NON-STRATA AREA)
-  RAINWATER DOWNPIPE SHAFT SPACE (NON-STRATA AREA)
-  WALL NOT ALLOWED TO BE HACKED OR ALTERED (INCLUDING BY WAY OF DRILLING)
-  NON - STRUCTURAL WALL
-  AIRCON CONDENSER

\*THE BALCONY SHALL NOT BE ENCLOSED. ONLY APPROVED BALCONY SCREENS ARE TO BE USED. FOR AN ILLUSTRATION OF THE APPROVED BALCONY SCREEN, PLEASE REFER TO PAGE 55 OF THIS BROCHURE



# 3 BEDROOM (with yard)

Type (3Y)a

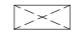


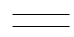

98 sq m

#02-03 to #08-03  
 #02-16\* to #08-16\*  
 #02-21 to #08-21  
 #02-34\* to #08-34\*

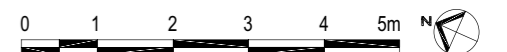


\* MIRROR UNIT

### LEGEND

- F - FRIDGE DB - DISTRIBUTION BOARD WC - WATER CLOSET W - WASHER
- D - DRYER AC - AIRCON LEDGE HS - HOUSEHOLD SHELTER
- RC - REINFORCED CONCRETE LEDGE (NON-STRATA AREA)
-  SERVICES VOID SPACE (NON-STRATA AREA)
-  RAINWATER DOWNPIPE SHAFT SPACE (NON-STRATA AREA)
-  WALL NOT ALLOWED TO BE HACKED OR ALTERED (INCLUDING BY WAY OF DRILLING)
-  NON - STRUCTURAL WALL
-  AIRCON CONDENSER

\*THE BALCONY SHALL NOT BE ENCLOSED. ONLY APPROVED BALCONY SCREENS ARE TO BE USED. FOR AN ILLUSTRATION OF THE APPROVED BALCONY SCREEN, PLEASE REFER TO PAGE 55 OF THIS BROCHURE





# 3 BEDROOM (with yard)

Type (3Y)a1

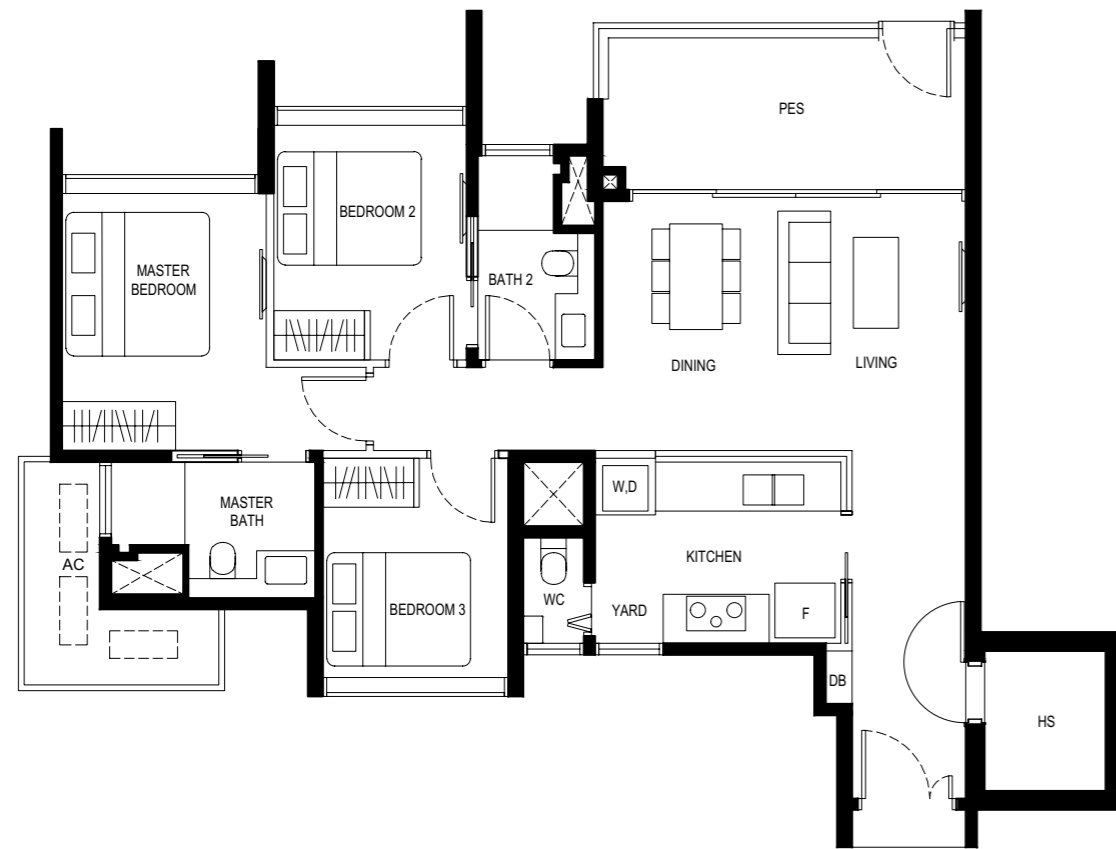
98 sq m

#01-03

#01-16\*

#01-21

#01-34\*



\* MIRROR UNIT

LEGEND

F - FRIDGE DB - DISTRIBUTION BOARD WC - WATER CLOSET W - WASHER D - DRYER

AC - AIRCON LEDGE HS - HOUSEHOLD SHELTER PES - PRIVATE ENCLOSED SPACE

SERVICES VOID SPACE (NON-STRATA AREA)

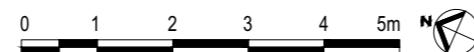
RAINWATER DOWNPIPE SHAFT SPACE (NON-STRATA AREA)

WALL NOT ALLOWED TO BE HACKED OR ALTERED (INCLUDING BY WAY OF DRILLING)

NON - STRUCTURAL WALL

AIRCON CONDENSER

\*THE BALCONY SHALL NOT BE ENCLOSED. ONLY APPROVED BALCONY SCREENS ARE TO BE USED. FOR AN ILLUSTRATION OF THE APPROVED BALCONY SCREEN, PLEASE REFER TO PAGE 55 OF THIS BROCHURE



# 4 BEDROOM

Type (4)a

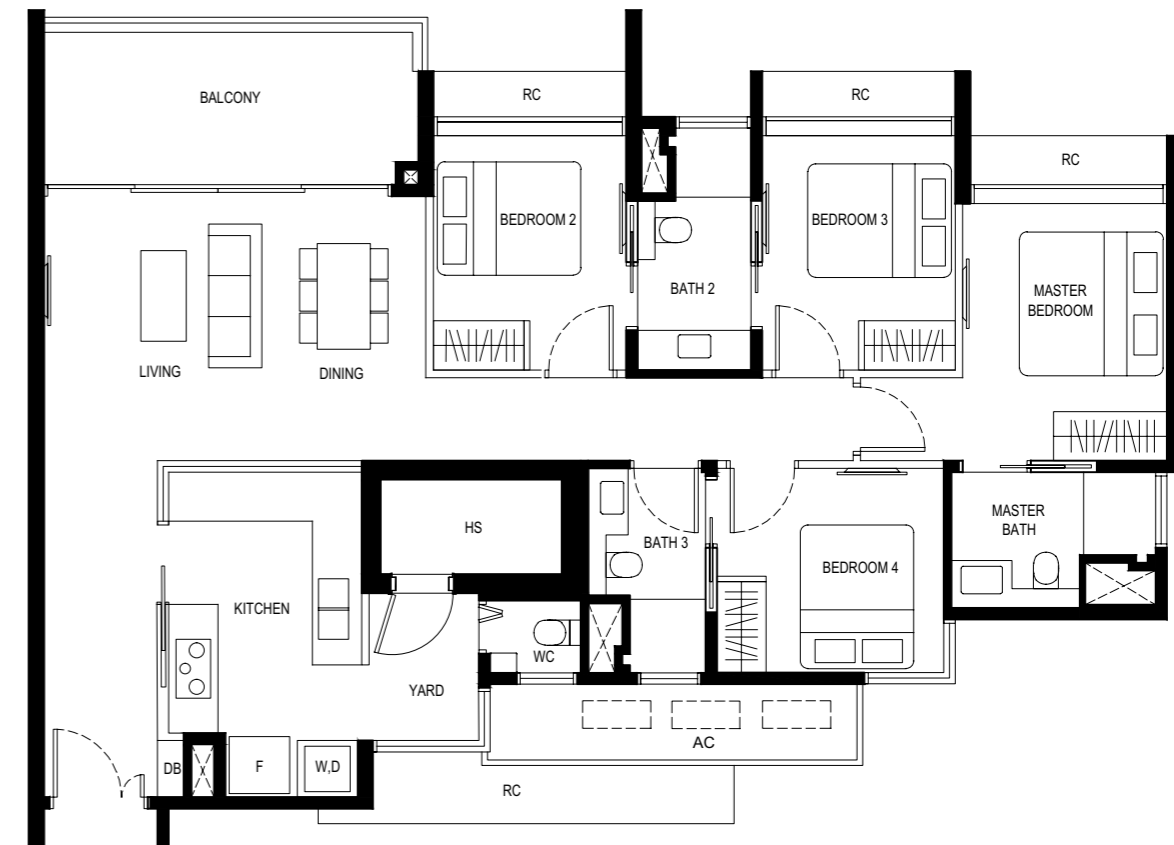
125 sq m

#02-07 to #08-07

#02-12\* to #08-12\*

#02-25 to #08-25

#02-30\* to #08-30\*



\* MIRROR UNIT

LEGEND

F - FRIDGE DB - DISTRIBUTION BOARD WC - WATER CLOSET W - WASHER

D - DRYER AC - AIRCON LEDGE HS - HOUSEHOLD SHELTER

RC - REINFORCED CONCRETE LEDGE (NON-STRATA AREA)

SERVICES VOID SPACE (NON-STRATA AREA)

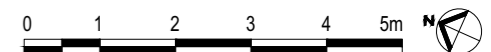
RAINWATER DOWNPIPE SHAFT SPACE (NON-STRATA AREA)

WALL NOT ALLOWED TO BE HACKED OR ALTERED (INCLUDING BY WAY OF DRILLING)

NON - STRUCTURAL WALL

AIRCON CONDENSER

\*THE BALCONY SHALL NOT BE ENCLOSED. ONLY APPROVED BALCONY SCREENS ARE TO BE USED. FOR AN ILLUSTRATION OF THE APPROVED BALCONY SCREEN, PLEASE REFER TO PAGE 55 OF THIS BROCHURE



# 4 BEDROOM

Type (4)a1

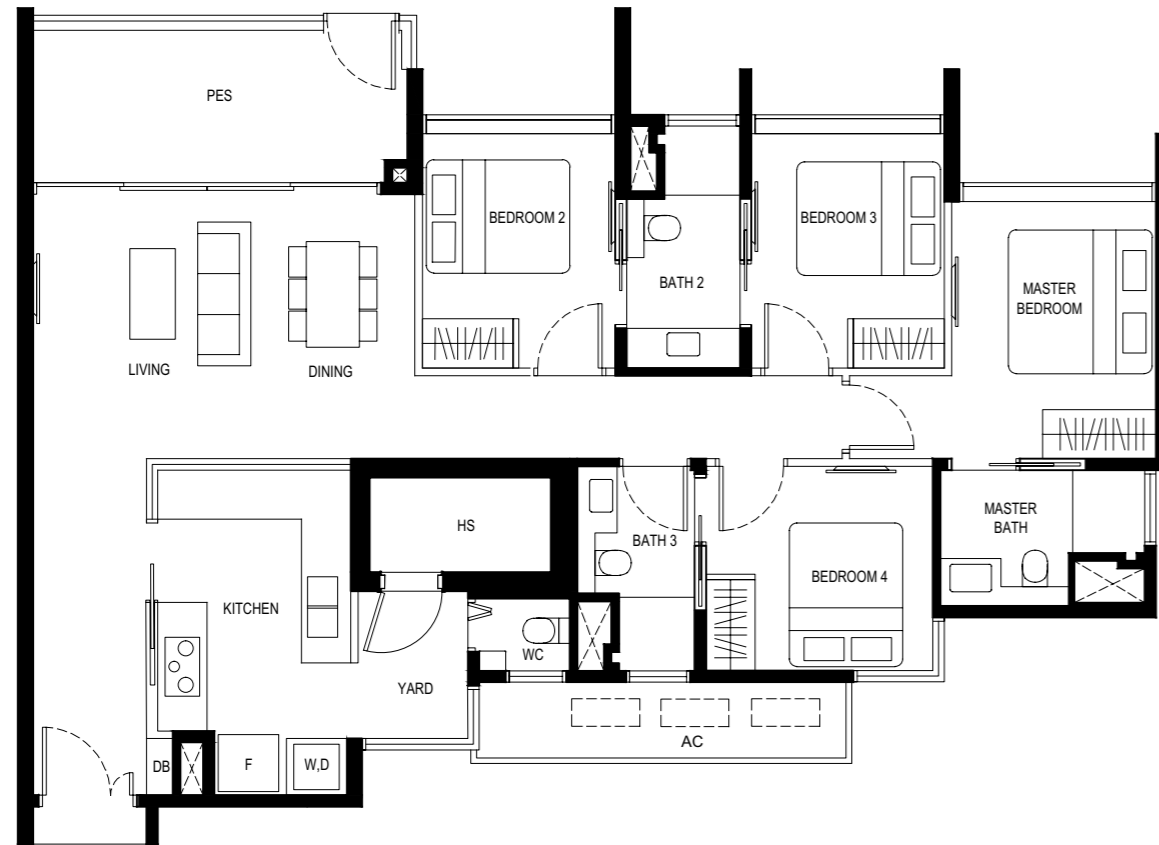
125 sq m

#01-07

#01-12\*

#01-25

#01-30\*



\* MIRROR UNIT

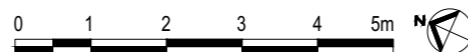
### LEGEND

F - FRIDGE DB - DISTRIBUTION BOARD WC - WATER CLOSET W - WASHER D - DRYER

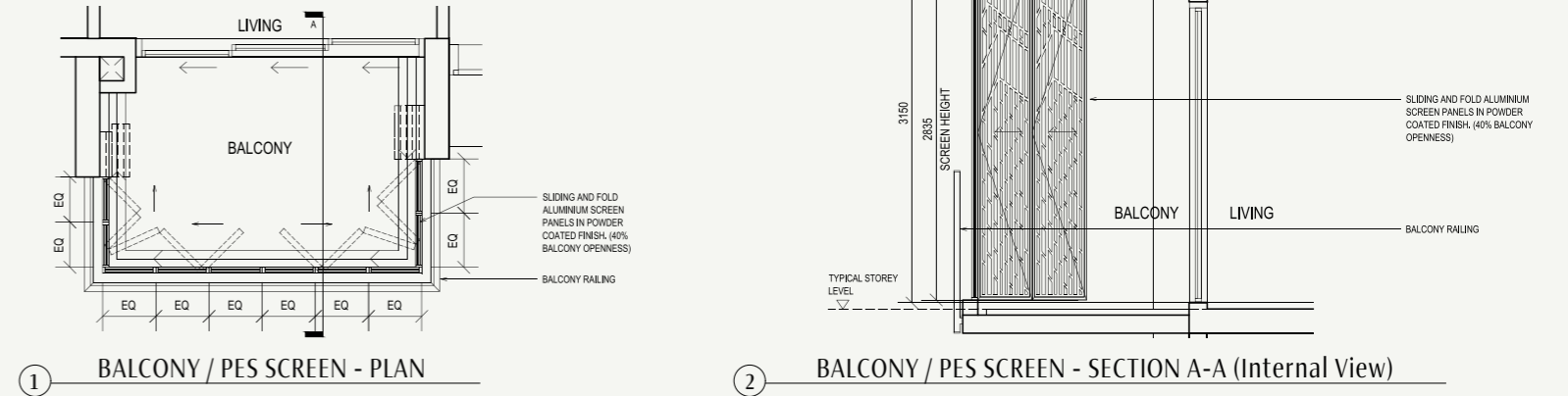
AC - AIRCON LEDGE HS - HOUSEHOLD SHELTER PES - PRIVATE ENCLOSED SPACE

- SERVICES VOID SPACE (NON-STRATA AREA)
- RAINWATER DOWNPIPE SHAFT SPACE (NON-STRATA AREA)
- WALL NOT ALLOWED TO BE HACKED OR ALTERED (INCLUDING BY WAY OF DRILLING)
- NON - STRUCTURAL WALL
- AIRCON CONDENSER

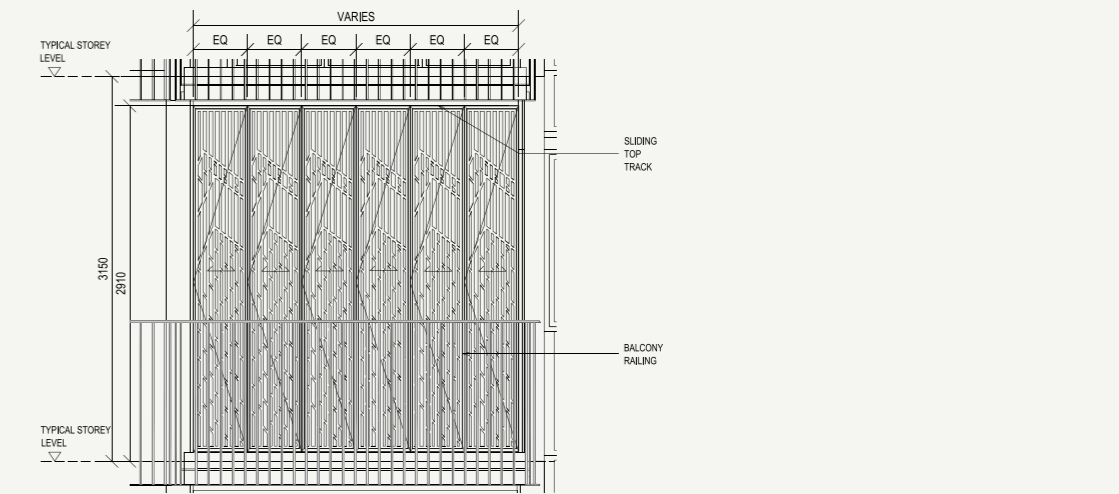
\*THE BALCONY SHALL NOT BE ENCLOSED. ONLY APPROVED BALCONY SCREENS ARE TO BE USED. FOR AN ILLUSTRATION OF THE APPROVED BALCONY SCREEN, PLEASE REFER TO PAGE 55 OF THIS BROCHURE



## APPROVED SCREEN FOR BALCONY AND PRIVATE ENCLOSED SPACE (PES)



2 BALCONY / PES SCREEN - SECTION A-A (Internal View)



### NOTES:

1. ON SITE VERIFICATION IS NECESSARY TO OBTAIN ACTUAL MEASUREMENT PRIOR TO FABRICATION AND INSTALLATION OF THE APPROVED SCREEN FOR BALCONY & PES
2. THE BALCONY / PES SHALL NOT BE ENCLOSED UNLESS WITH THE APPROVED SCREEN AS SHOWN ABOVE
3. THE COST OF SCREEN AND INSTALLATION SHALL BE BORNE BY THE PURCHASER.

EQ - EQUIDISTANT

Approved BP No.: A1369-04139-2018-BP01 dated 20 JUL 2023.

A1369-04139-2018-BP02 dated 29 JAN 2024.